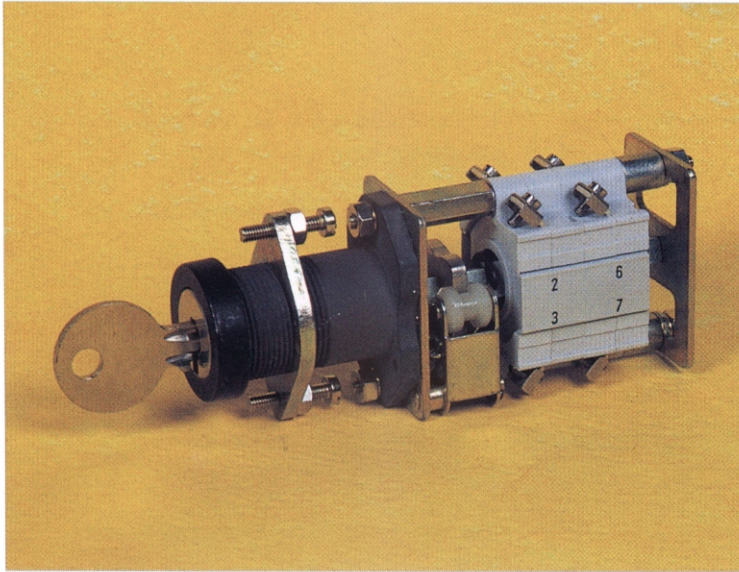


ROTARY KEY SWITCH FRMC 6



USES AND APPLICATIONS:

Switch with safety locking device to prevent unauthorized use, for steel panel mounting use in mosaic systems.

DESCRIPTION AND CONSTRUCTION FEATURES OF THE UNIT.

front plate, round with 25mms dia, or square shaped with 25mm side.

contacts: moving and stationary. Moving contacts are mounted on the control shaft. The stationary contacts are mounted on the melamine block either by soldering or with stand clamps for electric wire connection.

Gold Plated contacts available upon request.

Up to 8 positions and key withdrawable in all positions.

RATED ELECTRICAL CHARACTERISTICS

Type FRMC 6

Thermal current 1th = 12A

Insulation voltage $U_i = 690V$

Conditioned short-circuit current

Maximum peak current 1400a

Joule integral (1^{st}) 30kA²s

DECLARATION OF CONFORMITY TO EN 60947-5-1 STANDARD.

All the FRMC 6 devices comply with the requirements of EN 60947-5-1 standard.

Thus they also conform to EC directives n 73/23, 93/68, 89/336 (EMC), (low voltage directive).

TYPE TEST CARRIED OUT IN CESI LABORTORIES MILAN N MP-94/032850.

INSTALLATION

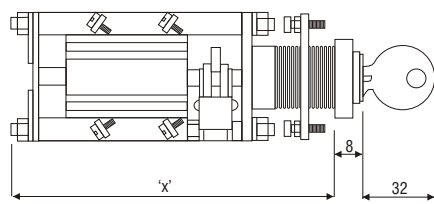
Apart from boring patterns shown in the following page, the installation process for the FRMC 6 is the same as for the FR10 type.

KEY TYPES & POSITIONS

The FRMC 6 can be supplied with different keys (up to 100 Different numbers, or different in groups i.e 10pcs 001, 10pcs 002, 10pcs 003 etc.)

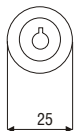
The FRMC 6 can have up to 8 positions, key withdrawable in all positions.

DIMENSIONS



NUMBER OF UNITS	LENGTH mm
1	89
2	102
3	115
4	128
5	141
6	154
7	167
8	180

Round front plate



Square front plate



Boring



RATED ELECTRICAL CHARACTERISTICS

Utilization categories	AC 14	AC 15	DC 14	DC 14	DC 13
Operational voltage (U_e)	400 V	400 V	110 V	220 V	220 V
Operational current (I_e)	10 A	6 A	3,5 A	1,5 A	6 A

STATIONARY CONTACTS: available in two types:

1st.) Standard type



2nd) extended type allows any extension of circumference lengths.



MOVING CONTACTS, available in 3 types:

A) straight type

B) square (right angle) type

C) continuous without current breaking



Quality specialized switches by

COMELETRIC

MIMIC COMPONENTS (PTY) LTD

ADDRESS: 17 Ramsay Str
Booyens 2091
Johannesburg South Africa

POSTAL: PO. BOX 38493
Booyens 2016 South Africa
E-mail: sales@mimic.co.za

TEL: +27 11 689 - 5700
FAX: +27 11 493 - 8821
WEB PAGE: mimic.co.za

DOC Ref FRMC 6