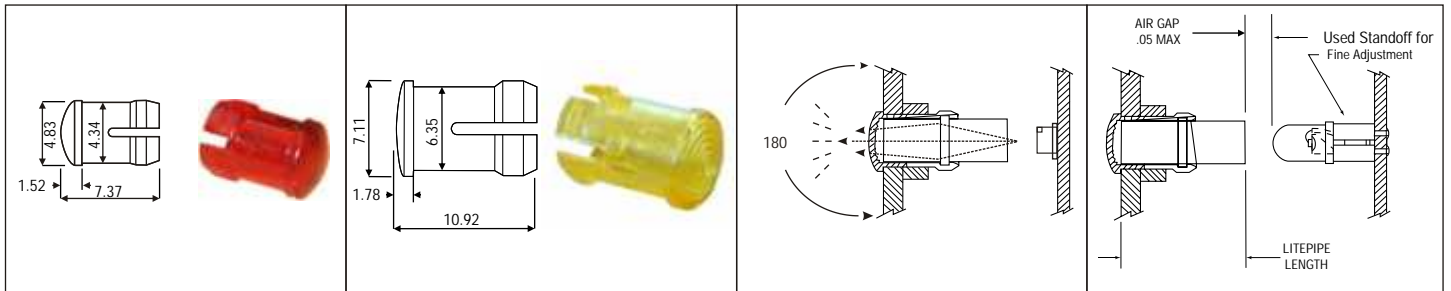


LED Holders and Accessories

SMB 200(3mm)

CLB 300(5mm)

LITEPIPE & SURFACE MOUNT LED'S



ORDERING CODE FOR THE LENSES:

CLB 300 RTP

MODEL _____ COLOUR _____

SMB 200(RND 3mm)
SMQ250(SQ 3mm)
CLB 300(RND 5mm)
SQB 400(SQ 5mm)

RTP Red Transparent
ATP Amber transparent
GTP Green transparent
BTP Blue transparent
YTP Yellow transparent
CTP Clear transparent

SPC 125 Spacer for CLB 300 & SQ 400
RNG 190 Lens Retaining ring for SMB200
RNG 234 Lens Retaining ring for CMC321
RNG 268 Lens Retaining ring for CLB300 & CMS322

ORDERING CODE FOR THE LITEPIPE:

LSV 020 CTP

MODEL _____ COLOUR _____

LSV (3mm), LCV (5mm)

CTP Clear transparent

PRODUCT CODE

LSV - CODE LENGTH(mm)

LCV - CODE LENGTH(mm)

020(5.1), 040(10.2), 060(15.2), 036(9.1), 056(14.2), 076(19.3)
080(20.3), 100(25.4), 120(30.4), 096(23), 116(29.5), 136(34.5)

ORDERING CODE FOR THE PCB STANDOFFS

STD XXX BLK

LENGTH _____ COLOUR _____
(2,54 to 25,4mm)



CNX 310

SPC 125

INSTALLATION

ORDERING CODES

MODEL _____ **CNX 310 012**

RESISTOR CODE _____

CODE	VALUE	CODE	VALUE
000	No Resistor	056	560
012	120	120	1200
018	180	220	220
033	330		

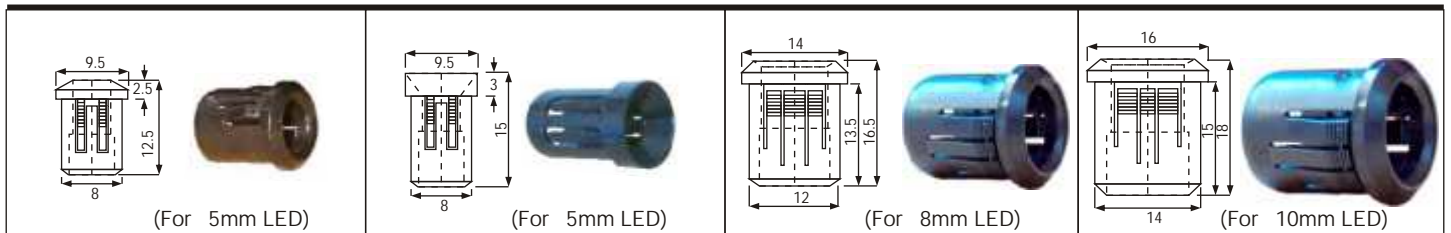
Black Plastic LED Holders

RTF-5010
Cutout: 8mm

RTF-5020
Cutout: 8mm

RTF-8080
Cutout: 12mm

RTF-1090
Cutout: 14mm

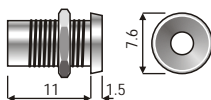


CB3 Cutout: 6.4mm

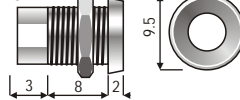
CB5 Cutout: 8mm

CB8 Cutout: 12mm

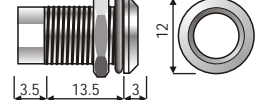
Chrome plated or black brass LED holder. Solder or use LED plug on connectors. For use with 3mm LED's.



Chrome plated or black brass LED holder. Solder or use LED plug on connectors. This pilot light gives a quality look which cannot be achieved with plastic bezels. For use with 5m LED's.



Chrome plated, black brass or convex type LED holder. Solder or use LED plug on connectors. This pilot light gives a quality look which cannot be achieved with plastic bezels. For use with 8mm LED's.



★★ See Discrete LED pages for LED options ★★

