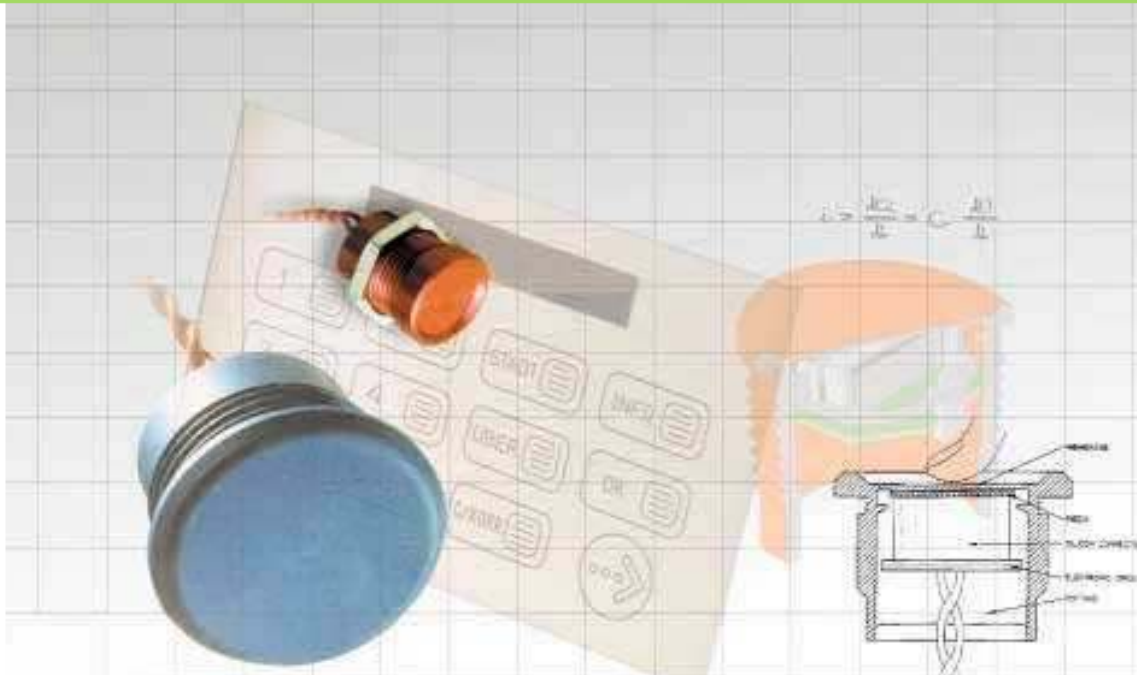


THE TECHNOLOGY



THE TECHNOLOGY

FUNCTION

The switch function is based on the physical principal of the effect . The external push force (Increase or decrease) activate a Piezo element that releases voltage utilized for switching. (Mos fet)

We offer, three switch functions:

- Momentary -120 Misc pulse
- Continuous -Circuit closed as long as switch is pressed
- Toggle -Switch changes position at each activation

ADVANTAGES

- Suitable for harsh environment
- Sealed metal surface
- No moving parts
- Prevents the need for maintenance
- Versatile mechanical configuration
- Water, dust proof - indoor and out door use
- Indestructible
- Long life expectancy, no amortization, tested for 50 million cycles
- Reduces service cost
- Manufactured in any shape



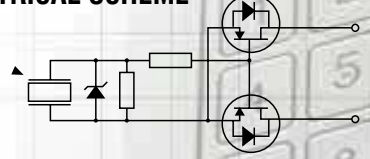
APPLICATIONS

- Vending machines
- Lifts
- Beverages
- Safes
- Public Internet and info kiosks
- Chemical & Petrochemical industry
- Safety and Security
- Car wash systems
- Food industry
- Medical equipment
- Mining equipment
- Industrial machinery

TECHNICAL DATA

Rated voltage	10-24V AC/DC
Rated Current	0 - 1A
Switch resistance on	< 25
Switch resistance off	> 5
Functions	One shot
Actuation force	Typically 3-5 N
Operating temp	-40 - + 125 C
Storage temp	-40 - + 125 C
Cycles	Over 50 million
EMI RFI	Non
Protection system	IP68
LED	5V DC I _{max} 10mA
Ring illumination	24V DC I _{max} 20mA

ELECTRICAL SCHEME



PIEZO SWITCHES

SINGLE SWITCHES



SMF

Function:
Material:
Anodized Color (Aluminum)
Dimensions:

One shot N.O. / N.C
Aluminum / Stainless steel
Red, Green, Blue, Gold, Black & Natural
20 mm, Thread PG16x1, length 19.5mm



SMA

Function:
Material:
Anodized Color (Aluminum)
Dimensions:

One shot N.O. / N.C
Aluminum / Stainless steel
Red, Green, Blue, Gold, Black & Natural
26 mm, Thread PG16x1, length 19.5mm



SBA

Function:
Material:
Anodized Color (Aluminum)
Dimensions:

Continuous
Aluminum / Stainless steel
Red, Green, Blue, Gold, Black & Natural
26 mm, Thread PG16



SBT tactile



Function:
Material:
Anodized Color (Aluminum):
Dimensions:

Short travel
One shot N.O. / N.C
Aluminum / Stainless steel
Red, Green, Blue, Gold, Black & Natural
28 mm, Thread M22x1.5



SML

Function:
Illumination:
Material:
Anodized Color (Aluminum):
Dimensions:

One shot N.O. / N.C
LED 5V Red, Green, Yellow
Aluminum / Stainless steel
Red, Green, Blue, Gold, Black & Natural
28 mm, Thread M22x1.5, length 19.5



SBR RING ILLUMINATED

Function:
Illumination:
Material:
Anodized Color (Aluminum):
Dimensions:

One shot N.O. / N.C
Ring illuminated LED Red, Green, Yellow 12/24V
Aluminum / Stainless steel
Red, Green, Blue, Gold, Black & Natural
25mm / 31mm M22x1 length 20mm / 25mm

VANDAL PROOF PUSHBUTTONS

CUSTOM MADE SWITCHES



ONE SHOT FUNCTION CONTINUOUS OR TOGGLE.

Any application dictating unique products configuration is covered by our custom made Program supported by the Baran powerful engineering.

The **EVERSWITCH** is available in a variety of shapes and configurations.
Various metals, dimensions and colors
Any required voltage and amperage
Various LED colors 12V or 24V DC voltage
A wide choice of cables and connectors
Character marking Laser engraved, Pantograph and Anodized printing.



5 PERFORMANCE GUARANTEE*
KEYPADS SO INDESTRUCTIBLE
WE DON'T WARRANTY THEM,
WE GUARANTEE THEM!



BARAN
Advanced Technology (®)

