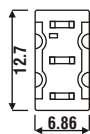


TOGGLE SWITCHES

CONTACT RATE: 5A with resistive load @ 125V AC or 28V DC
 ELECTRICAL LIFE: 50 000 make & break cycles at full load
 CONTACT RESISTANCE: 10mA max initial @ 2-4V DC,
 100mA for both coin silver and gold plated contacts.
 OPERATING STRENGTH: -30°C to 85°C

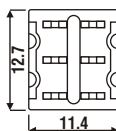
TYPE	MODEL				No. of POSITIONS
SPST	1-SP1TI	ON	NONE	ON	2
	1-SP3TI	ON	OFF	ON	3
	T8014	ON	OFF	ON	3
SPDT	1-SP4TI	(ON)	OFF	(ON)	3
	1-SP5TI	ON	OFF	(ON)	3
TERMINAL COMMON		2-3	OPEN	2-1	
Schematic					
<p>(ON) = MOMENTARY</p>					

Cutout: 6.35mm



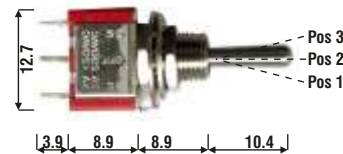
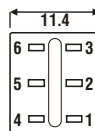
DPDT	1-DP1TI	ON	NONE	ON	2
	1-DP3TI	ON	OFF	ON	3
TERMINAL COMMON		2-3 & 5-6	OPEN	2-1 & 5-4	
Schematic					

Cutout: 6.35mm



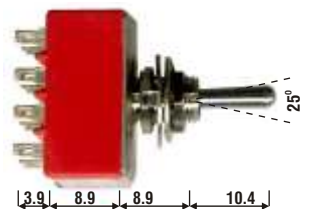
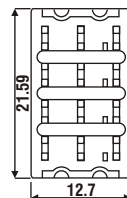
3 WAY	T812	ON	ON	ON	3
	TERMINAL COMMON	2-3 & 5-6	2-3 & 5-4	2-1 & 5-4	
Schematic					

Cutout: 6.35mm



4PDT	T8401	ON	NONE	ON	2
	TERMINAL COMMON	2-3, 5-6, 8-9 & 11-12	OPEN	2-1, 5-4, 8-7 & 11-10	
Schematic					

Cutout: 6.35mm



MINIATURE TOGGLE SWITCHES

SPDT	TS-4	ON	NONE	ON	2
	TS-4A	ON	OFF	ON	3
TERMINAL COMMON		2-3	OPEN	2-1	
Schematic					
CONTACT RATE: 3A with resistive load @ 120V AC or 28V DC ELECTRICAL LIFE: 30 000 make & break cycles at full load CONTACT RESISTANCE: 20mW max initial @ 2-4V DC, 100mA for both coin silver and gold plated contacts. OPERATING STRENGTH: -30°C to 85°C					

Cutout: 5mm



ACCESSORIES

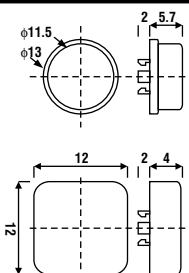
T80T
Dress Nut

T1-R
Red rubber toggle cap

TACTILE SWITCHES

TA1275 12x12mm - 7.5mm high
Voltage: 50mA@12V DC

KTSC22R
Red Tactile Lens



U5540
Square Tactile Lens

TA1243 12x12mm - 4.3mm high

TA067.5 6x6mm - 7.5mm high

TA069.5 6x6mm - 9.5mm high

Voltage: 50mA@12V DC