

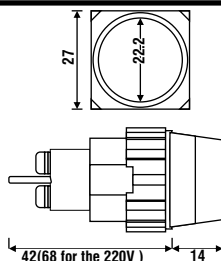
PILOT LIGHTS $\varnothing 22$ - $\varnothing 30$ mm

KRE322F

Cutout: 22mm
110 & 220V AC
110 & 220V DC

Colours: Red, Green, Yellow, Orange, Blue or White

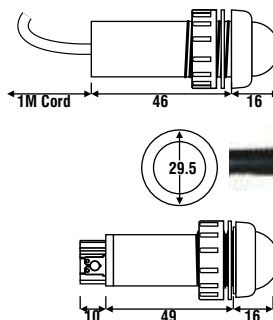
Resistor type Multi Chip LED indicator with a flat lens. Black casing. IP65



ADDA LUMO LMB22

Cutout: 22mm
24, 32, 48V AC/DC
110, 220V AC
Colours: Red, Green or Yellow

IP65 FRONT & BACK! Ideal for very damp conditions where corrosion and moisture can attack the front & back of standard pilot lights. No terminals at the rear to short or corrode. Standard cord is 1 metre long. FLASHING LUMO ALSO AVAILABLE



ADDA LUMO LMT22

Cutout: 22mm
24, 32, 48, or 60V AC/DC
110, 220V AC
Colours: Red, Green or Yellow

IP65 FRONT Large 20mm Dome Led. Silver Plated Industrial "Fast On" Connectors (with Option Of Accepting Ring, Fork Or Bootlace Ferrules) FLASHING LUMO ALSO AVAILABLE

ADDA MAC22

Cutout: 22mm
110, 220, 380, 500V-600V AC Only

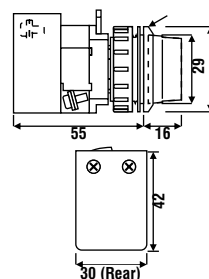
With multichip "Based" led lamp. A locally developed AC ONLY unit that generates less heat. It is totally enclosed in a black body & uses an 8 chip "multichip" BA9S bayonet LED element.

Colours: Red, Green, Yellow, Orange, Blue, Clear or Milky White. (Green LED with a Blue lens)(Yellow LED with a Clear or White lens).

ADDA SAC22

As per MAC22 but with new super single chip "BA9S LED". Colours: Red, Green, Yellow, True Blue, True White or Clear.

YADP30 Collar for a 30mm panel cutout



ADDA MRE22

Cutout: 22mm
110, 220V AC/DC

ADDA MDA22

Cutout: 22mm
24, 32, 48, 60V AC/DC
MDA22 has a non-vented back

MRE22 & MDA22 with multi chip "Based" led lamp. These medium cost units are proving an ideal replacement for filament lamps due to its 15 YEAR expected life. The operating voltage supplied to the LED is limited to 24V, thus protecting the LED element against "over-voltage" conditions. (This is also an important safety consideration as the voltage on any accessible part is limited to 24V DC).The MDA22 has special Voltage Protection.

Colours: Red, Green, Yellow, Orange, Blue, Clear or Milky White. (Green LED with a Blue lens)(Yellow LED with a Clear or White lens).

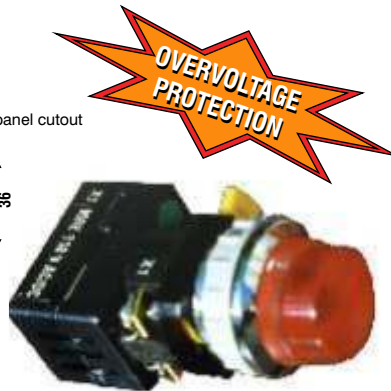
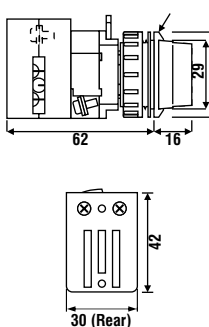
ADDA SRE22

As per MRE22 but with new super single chip "BA9S LED".

ADDA SDA22

As per MDA22 but with new super single chip "BA9S LED". Colours: Red, Green, Yellow, True Blue, True White or Clear.

YADP30 Collar for a 30mm panel cutout



This picture shows an MRE22 with a YADP30 Collar

KRE222A

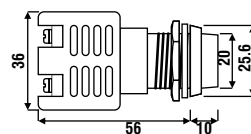
Dome Lens
Cutout: 22mm
12, 24, 30, 48, 60, 110, 220V AC/DC

Four super-bright LEDs give this top of the range pilot light excellent front & side views. The front lens/LED can be clipped out to change colour.

KRE222F

Flat Lens
Cutout: 22mm
12, 24, 30, 48, 60, 110, 220V AC/DC

Colours: Red, Green, Yellow, Amber or White



30mm adaptor collar available (see YADP30B on bottom of page).



YADP30

Cutout: 30mm

(A) This is a chrome-plated collar which allows the MAC/MRE/MDA/ND22 to fit into a 30mm cutout.

YADP30B

Cutout: 30mm

(B) This is a black collar which allows the KRE 222 F/A/ND22 or the LUMO Range to fit into a 30mm cutout.

